

Design and Implementation of a SharePoint Based Website for IT Directorate BINA NUSANTARA (June 2011)

Dewi Riana, David Widjojo

Abstract — This journal discusses the design and implementation of a SharePoint based website for IT Directorate BINA NUSANTARA. The main purpose of implementing this system is to allow easy editing of content from a static web with just replacing the contents of the website through a browser (such as CMS). So, the old system which only allows changes to content through HTML editing via the HTML editor and need to access the file directly, be converted into a much more user friendly with editing via web browser directly, without accessing the physical file from the HTML page.

During software development, methodology used is Waterfall. The first stage is the collection of user requirements as well as any consideration of the transfer of the website. The second stage is the analysis of the right design for the website with the SharePoint platform. The third stage is the development of the website. The fourth stage is to test the new website is good or not, by testing it for yourself or throw to the user to become testers. The last stage is the website maintenance.

Conclusion of the whole internship process is to move the website into the IT Directorate SharePoint platform with the aim of facilitating the replacement of content with simply accessing the web via a browser, and then manage the website as well via a browser.

Keywords - website; user friendly, sharepoint, browser

I. INTRODUCTION

At this time, information plays a very important role in every aspect of life. Each party in a company are required to be able to convey information not only quickly but also has a high degree of accuracy. In a system as well, holds information vital function and role in it. Any information should be stored, processed, and interpreted properly so that the system is capable of running as it should be effectively and properly.

Widjojo. David is with the IT Directorate BINA NUSANTARA, Jakarta, (corresponding author to provide phone: +6281807470990; e-mail: david.am@binus.edu).

The company are required to be able to anticipate things in the system so can be run in accordance with the rules established, which previously has been running the system manually and often errors occur that can disrupt the running system. BINA NUSANTARA University who is an academic institution of education has a division in the department of Technology Development Directorate of Information Technology (IT). The department has its own website, which initially is still very manual, in the sense when I want to do the replacement contents of the website, the admin should open the HTML file and change it, then upload again. This makes the job becomes increasingly slow and increase the human error as well. To respond to this, the authors decided to move the website into SharePoint platform which will allow the admin to do the conversion of website content by simply accessing the web browser and replace it there. Microsoft SharePoint 2010 collaboration software provides enterprise-scale capabilities to meet business-critical needs such as managing content and business processes, simplifying how people find and share information across boundaries, and enabling informed decisions [1]. Using the combined collaboration features of SharePoint 2010—which includes Microsoft SharePoint Foundation 2010 and Microsoft SharePoint Server 2010—plus the design and customization capabilities of Microsoft SharePoint Designer 2010, organizations can enable their users to create, manage, and easily build SharePoint sites that are discoverable throughout the organization [1].

II. METHOD

A. Field research

Field research was conducted to obtain data on whatever is needed to create a website.

B. Analysis Method

The means used to analyze the existing problem is:

The survey was conducted in 2 ways:

- 1) Interview, conducted by asking questions to a nutritionist.
- 2) The questionnaire, carried out by asking the question in the general population.

C. Study Method literature

This method is used to collect information in the form of written literature or books as a theoretical basis in preparing the thesis.

III. RESULT

A. Analysis on the old website

The old website of IT Directorate has a url <http://ict.binus.edu/>, built using ASP technology. This website is a static website. If the admin want to change the content content, then the admin needs to open their HTML code, change the content to be replaced, and then to publish again. The old system is very time consuming, due to replace some content only in a different time, admins need to do the above steps over and over again.

B. Menu structure

Here is the menu structure of the website

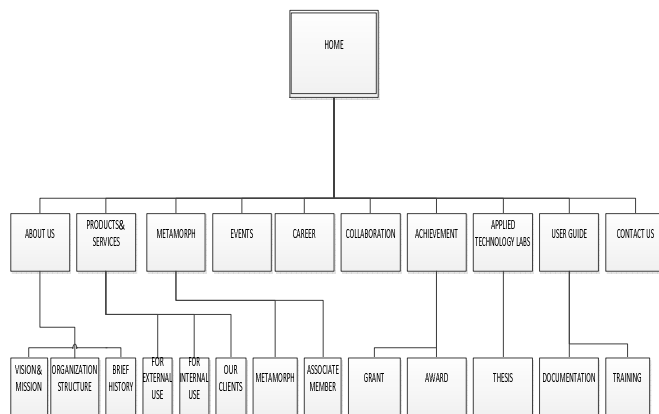


Figure 1. Menu Structure

The whole design of the new website will follow the old website design, so only the structure and its features are changed. Because there are several additional features of the SharePoint platform, then the terms of the design will remain little changed from the old design.

C. Features

- The administrator's login; This feature allows you to restrict user to change the content in the content, so the only people who have login accounts that can make changes. Users who do not have a login account, will have limited access to features that exist on this website.

- Edit the content page through a browser; this feature allows the user to change the content, design, and website frame through the browser.
- Create a new page just by doing a few commands in the browser.
- To make custom master page, approval, and so on, simply use the software support, which is SharePoint Designer.

IV. CONCLUSION

The new website I have created on the platform of SharePoint, is expected to be useful to help the administrator in maintaining website content, website content will be kept up to date and information to be conveyed to the reader would be more useful. This website will also be enriched with the information because it is a great portal that can integrate with each other between BINA NUSANTARA Group website.

V. ADVICE

For further development, some of suggestions that can be given is as follows:

- Additional feedback feature
- Additional features data collaborating

VI. BIBLIOGRAPHY

[1] Microsoft Corporation (2010, May 10). Available: <http://msdn.microsoft.com/en-us/library/dd776256%28v=office.12%29.aspx>.

David Widjojo, born in DKI Jakarta, July 07, 1990. Christian.